

STREETLIFE®

**Rough
&
Ready**

STREETLIFE BV**Head Office**

Herengracht 36
2312 LD Leiden
The Netherlands
T +31 (0)71 333 33 33
streetlife@streetlife.nl
www.streetlife.nl

STREETLIFE Europe

UK +44 (0)20 30 20 1509
enquiriesUK@streetlife.nl
DE +31 (0)71 333 33 60
Auskunft@streetlife.nl
FR +33 (0)80 614 02 22
demandes@streetlife.nl

STREETLIFE Studio Scandinavia

Malmö, Sweden
T +46 (0)41 677 50 53
studioscandinavia@streetlife.nl

STREETLIFE America LLC

Philadelphia, PA
T 001 215 247 0148
streetlife@streetlifeamerica.com

STREETLIFE Middle East

by WTB Group, Dubai - UAE
T +971 (0)4 88 607 00
streetfurniture@wtburden.ae

More information is available on our website:

- the complete Streetlife Collection
- online catalogue (PDF): available in Nederlands, English, Deutsch & Français
- product search tool: The Product Selector
- recent projects and product photos

Follow STREETLIFE BV on  

Rough&Ready benches in single and double arrangements as well as custom tables are placed on the Kinderdijk in The Netherlands as resting places along the famous dike. The replacement of old furniture of this Unesco World Heritage is just one part of a larger masterplan, that copes with the quality of the dike as well as the capability of receiving the increasing numbers of visitors.



The Rough&Ready Range

Streetlife is a design-driven company with a passion for creating innovative design elements for public spaces. We create products that are natural in style and use the landscape as our starting point. The Rough&Ready (R&R) Range has a unique place within the Streetlife Collection and incorporates the three themes of Street Furniture, Tree Products and Bridges & Decking.

What makes the R&R product line unique?

- The coherence of the various R&R products is unprecedented, in part due to the use of one substantial modular timber size.
- Rough&Ready gives the urban planner/architect a great deal of freedom in shape and design.
- The appearance is entirely contemporary – Rough&Ready is sturdy and robust. The R&R product range uses sustainable materials.

In 2004, we introduced the first straight R&R bench with the Streetlock® principle. Linked R&R benches made of FSC® recycled hardwood were provided for the 2012 London Olympic Games. Rough&Ready is constantly evolving. After a successful launch of our first R&R booklet in 2013, we are grateful to be able to present this updated version of the R&R Collection to you.

We happily challenge landscape architects to get in touch. Apply the R&R elements harmoniously in your projects and come forward with new ideas. Our in-house design team looks forward to working with you.

Peter Krouwel

Designer & Director Streetlife



Index

Curved Benches
Royal Curved Benches
Circular Benches
Top Seats & Between Seats
Seat Wall & Raised Border Seats
6 Benches
T6 Benches
10 Benches
Crosswise Benches

Detail Booklet

Big Green Benches
Loungers
Carré Benches & Cubes
Tree Isles
Hug a Tub & Basic Planters
All Black
Picnic Sets
Bicycle Parking & Bollards
Country Bridges
Shades



London (UK)



R&R-C-200-60 (+Ext) + Low Backrest, 400x60x45 cm / 157"x24"x18"

R&R-C-200-60, 200x60x45 cm / 79"x24"x18"

R&R-C-200-60-AB (+Ext) + Low Backrest, 400x60x45 cm / 157"x24"x18"

R&R-C-200-60 (+Ext x 2) + High Backrest, 600x60x45 cm / 236"x24"x18"

The Rough & Ready Curved Benches



Amstelveen (NL)



Villeneuve le Roi (FR)

EN
The R&R Curved Benches combine a certain elegance with a robust appearance, and create curving serpentine formations through the landscape. The modules are 200 cm in length and can be linked together endlessly, following the lines of the outdoor space. The Curved Benches naturally accentuate the edges of garden beds and walkways. The transverse positioning of the wooden beams offers an effective way to deter skaters!

FR
Les bancs courbes R&R serpentent à travers le paysage. Ils allient élégance et robustesse. Les bancs de 200 cm peuvent être combinés à l'infini. Ils se fondent dans la perspective. Les bancs courbes accentuent d'une façon naturelle les bordures des plates bandes et les sentiers. L'orientation transversale de leurs lattes de bois permet de tenir à distance les adeptes du skate board!

DE
Die radialen R&R-Bänke durchziehen die Landschaft wie Girlanden. Die Curve Bänke kombinieren eine gewisse Eleganz mit einem robusten Erscheinungsbild. Die 200 cm langen Module lassen sich endlos kombinieren und passen sich der Linienführung des Geländes an. Beeteinfassungen und Pfade lassen sich mit den Curve Bänken auf natürliche Weise betonen. Die Quer-Ausrichtung der Holzbalken sorgt für eine zielgerichtete Anti-Skate-Lösung!

NL
De R&R Curve banken creëren slingers in het landschap. De Curve banken combineren een zekere elegantie met een robuust uiterlijk. De modules van 200 cm zijn eindeloos koppelbaar en voegen zich naar de lijnvoering van de buitenruimte. Borderlijnen en looppaden kunnen met de Curve banken op natuurlijke wijze geaccentueerd worden. De dwarse oriëntatie van de houten balken creëert een doeltreffende anti-skate oplossing!



Dongen (NL)

The Rough & Ready Curved Benches

The Rough & Ready Royal Curved Benches

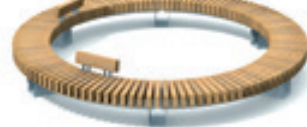


R&R-C-200-60(-Ext x 3) + Royal Backrest, 800x60x45 cm / 315"x24"x18"





R&R-CI-R150, 300x40x45 cm / 118"x16"x18"



R&R-CI-R200 + Low Backrests, 400x50x45 cm / 157"x16"x18"



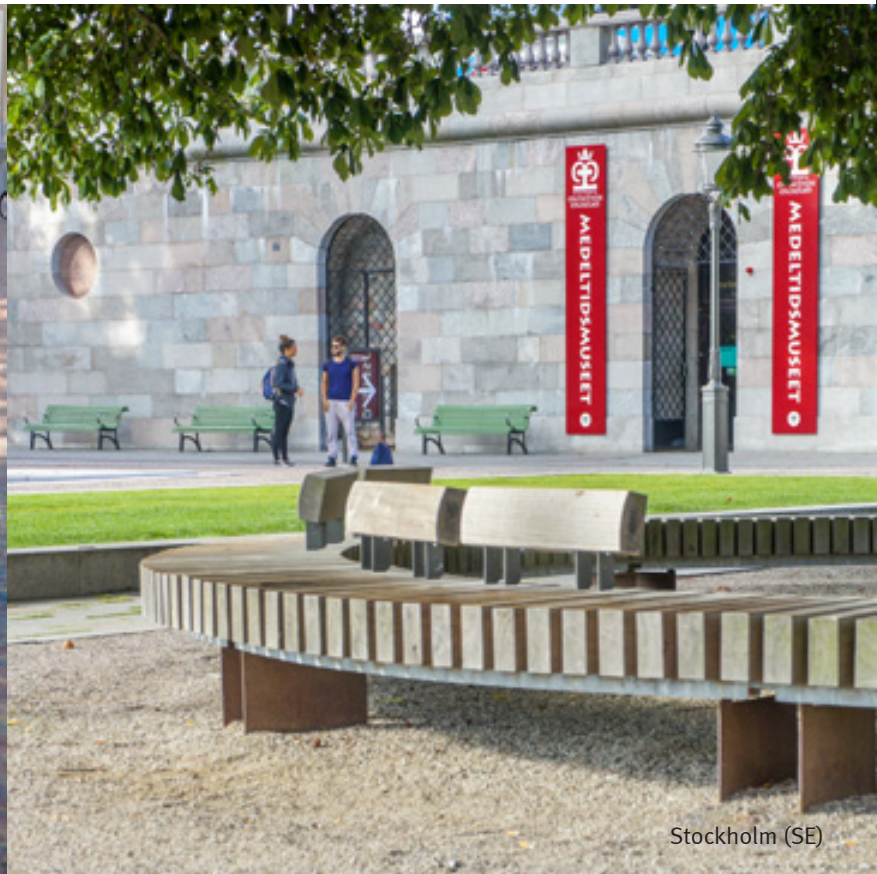
R&R-CI-R250-AB, 500x60x45 cm / 197"x24"x18"



R&R-CI-R350 + Royal Backrest, 700x60x45 cm / 276"x24"x18"



Veghel (NL)



Stockholm (SE)

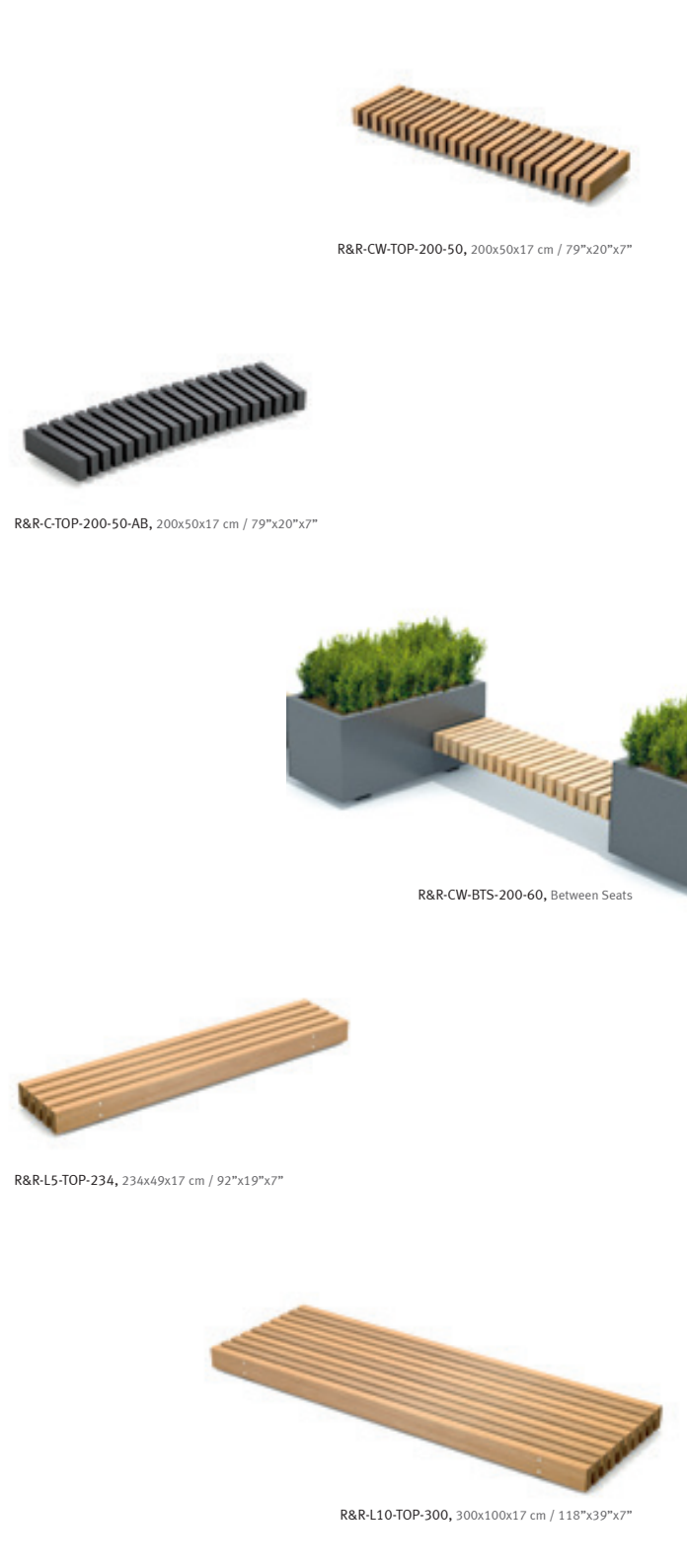


Brampton (CAN)

The Rough & Ready Circular Benches



Helsingborg (SE)



R&R-CW-TOP-200-50, 200x50x17 cm / 79"x20"x7"



R&R-C-TOP-200-50-AB, 200x50x17 cm / 79"x20"x7"



R&R-CW-BTS-200-60, Between Seats



R&R-L5-TOP-234, 234x49x17 cm / 92"x19"x7"



R&R-L10-TOP-300, 300x100x17 cm / 118"x39"x7"



Ottestad (NO)

The Rough & Ready Top Seats



Minneapolis (USA)



New Bedford (USA)



Amersfoort (NL)



R&R-SW-200, Seat Wall with LED Variations



Oslo (NO)

EN
R&R Seat Walls are available as detached benches or mounted against a tree or shrub tub, or other plant products. The continuous base structure is usually made of CorTen steel. R&R beams are then attached to this frame with recessed mounts in the CorTen steel plate. Because the FSC® hardwood beams (60cm - 24") are mounted transversely, they act as a natural deterrent against skateboarders. The StreetLock® system makes them easy to replace.

FR
Les Murs d'Assises R&R peuvent être livrés sous forme de bancs individuels ou être utilisés comme murs de retenue. Il est alors possible de les combiner avec de la végétation. Leur long châssis est en acier CorTen. Il présente des encoches dans lesquelles viennent s'insérer les lattes de bois. L'orientation transversale des lattes de bois dur FSC® R&R (60cm) tient naturellement à distance les skateurs. Les lattes se remplacent facilement grâce au système StreetLock®.

DE
Die R&R Seat Walls können als freistehende Sitzbänke ausgeführt werden, aber auch als Stützwand in Kombination mit Bepflanzung. Die durchgängige Unterkonstruktion wird in der Regel aus Cortenstahl gefertigt. Diese Plattenkonstruktion ist mit Aussparungen für die Montage der Balken versehen. Die quer angeordneten R&R-Balken (60cm) aus FSC® Hartholz dienen als natürlicher Schutz vor Skatern und lassen sich dank des StreetLock® Systems problemlos austauschen.

NL
De R&R Seat Walls zijn als vrijstaande zitbanken uit te voeren, maar ook als keerwand in combinatie met beplanting. De continue doorlopende onderconstructie wordt meestal uit CorTen vervaardigd. Deze plaat constructie heeft een uitsparing waar de balken tussen gemonteerd zijn. De dwarsgeplaatste R&R balken (60cm) uit FSC® hardhout vormen een natuurlijke anti-skate oplossing en zijn eenvoudig uit te wisselen door het StreetLock® systeem.



The Rough & Ready Seat Wall

In the Grassy Lake Forest Preserves (USA) the trails are suited with diverse R&R products. R&R Seat Walls offer seats with crosswise placed slats integrated in CorTen steel retaining walls. The Seat Walls form the natural meandering borders of the trail. The Streetlife products are a bespoke fit to the plans of the Lake County Forest Preserve.



Pleasanton (USA)



London (UK)



R&R-L6-234, 234x59x45 cm / 92"x23"x18"



R&R-L6-250-AB, 250x59x45 cm / 79" or 98"x23"x18"



R&R-L6-300 + Low Backrest, 300x59x45 cm / 118"x23"x18"



R&R-L6-300 (+Ext x 2), 900x59x45 cm / 354"x23"x18"



R&R-L6-300(+Ext) + High Backrest, 600x59x45 cm / 236"x23"x18"



The Rough & Ready 6 Benches

In front of the Spaarne Gasthuis in Haarlem, one of the first linked R&R6 bench was realized. This project has been established with MTD Landschapsarchitecten from Den Bosch. The placement of the bench provides room for waiting and relaxation for both visitors and patients, while passengers are guided towards the entrance.

For London 2012, Streetlife won Olympic gold for its bench configurations in the Olympic Parklands. In close collaboration with the landscape architects of LDA Design, Hargreaves and ARUP, four types of Streetlife benches were installed. The photograph shows two linked Streetlife R&R 6 Benches with a soft back and arm rests.



Queen Elizabeth Olympic Park London (UK)

EN

The long, straight Rough&Ready benches are timeless and fit perfectly in the character of today. The intelligent Streetlock® fastening system make this range of benches easy to maintain.

These robust benches are constructed from durable FSC® hardwood beams of 7x15 cm. The combination of R&R-6 benches with R&R Curve elements creates striking bench formations.

FR

Les longs bancs droits R&R sont indémodables. Ils correspondent parfaitement à l'air du temps. Équipés de l'astucieux système de fixation Streetlock®, ces bancs ont du caractère et ne demandent que peu d'entretien. Ils sont constitués de robustes lattes en bois dur FSC® de 7x15 cm. On peut les associer à des éléments courbes R&R pour réaliser des agencements qui sortent de l'ordinaire.

DE

Die langen, geraden Rough&Ready Bänke sind zeitlos und passen perfekt in das moderne Stadtbild. Dank der intelligenten Streetlock® Befestigung entsteht ein wartungsfreundliches Bankprogramm. Es sind robuste Bänke, aufgebaut aus massiven FSC®-Hartholzbohlen von 7x15 cm. Durch die Kombination aus R&R-6 Bänken und R&R Curve Elementen lassen sich überraschende Bank-Konfigurationen zusammenstellen.

NL

De lange rechte Rough&Ready banken zijn tijdloos en passen perfect in het huidige tijdsbeeld. Door de slimme Streetlock® bevestigingswijze ontstaat een onderhoudsvriendelijk banken programma. Het zijn stoere banken opgebouwd uit robuuste FSC® hardhouten balken van 7x15 cm. Door het combineren van R&R-6 banken met de R&R Curve elementen zijn verrassende bankopstellingen te realiseren.



Lier (NO)



Staten Island NY (USA)



R&R-T6-600, 600x59x45 cm / 236x23x18

R&R-T6-234, 234x59x45 cm / 92"x23"x18"

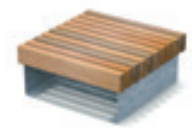


The Rough & Ready T6 Benches



The Rough & Ready 10 Benches

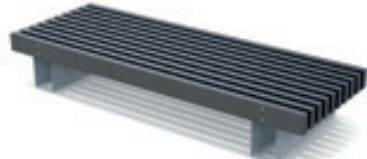
Shelby Farms Memphis (USA)



R&R-L10-CUB, 100x100x45 cm / 39"x39"x18"



R&R-L10-234, 234x100x45 cm / 92"x39"x18"



R&R-L10-250-AB, 250x100x45 cm / 98"x39"x18"



R&R-L10-300, 300x100x45 cm / 118"x39"x18"



R&R-L10-300(+Ext x 2), 900x100x45 cm / 354"x39"x18"



Groningen (NL)

Leudal (NL)



R&R-CW-200-60(+Ext) + Low Backrest, 400x60x45 cm / 158"x24"x18"



R&R-CW-200-60 + low backrest, 200x40x45 cm / 79"x16"x18"



R&R-CW-200-60-AB(+Ext), 400x60x45 cm / 158"x24"x18"



Winchester (UK)



Weißenburg (DE)

The Rough & Ready Crosswise Benches



Baltimore (USA)



Rough & Ready

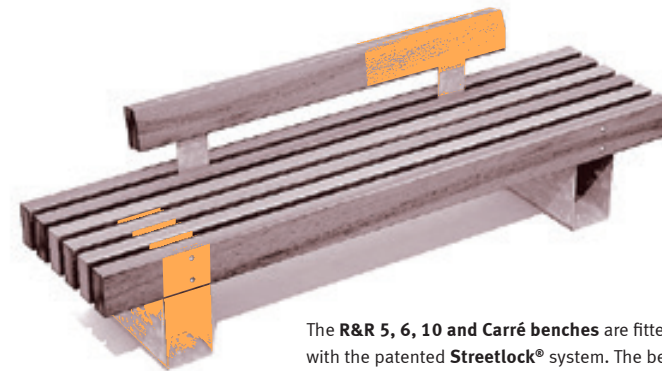
"... you see that every detail is now clarified." - Christo

2006/2007
copyright

The **R&R 6 and 10 benches** can be linked endlessly to create an extra long bench. The straight benches have a length of 234 or 300 cm / 92" or 118". The versions with All Black beams have different lengths of 200 and 275 cm / 79" and 108". Bench supports made of 4 mm / $\frac{3}{16}$ " thick sheet metal are available in hot-dip galvanized steel, CorTen steel or powder coated finish in RAL colours.



The low and high **R&R backrests** of 154 cm / 61" have been convexly planed. The universal Streetlife armrests in stainless steel can be fixed at various positions.



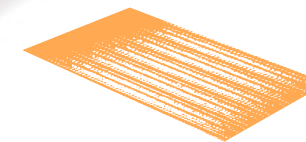
The **R&R 5, 6, 10 and Carré benches** are fitted with the patented **Streetlock®** system. The beams are not screwed, but locked with a stainless steel bar and theft-proof nuts. This construction allows the beams to be turned over or easily replaced. Very convenient in the event of damage!



Streetlife is your partner in small bridges. We design and deliver durable pedestrian and bicycle bridges and decking materials in compliance with eurocode and local regulations. Please go to the website and get inspired by our collection of architectural prefab bridges and decking materials.



The **Country Bridge** is a flat bridge for bicycles and pedestrians. Minimal in design with a maximum span of 10 meters / 33 ft. The low and high R&R balustrades have industrial supports in galvanized or CorTen steel.



Streetdeck®40 is an eco-friendly alternative for hardwood decking. The strong profiles are 4x19 cm / 2"x7". The high end wood composite of German origin consists of 75% shredded wood and 25% synthetic material (PE).

2007
copyright

The **R&R Bicycle** stand is user friendly and unique in design. The hardwood bar will not damage the bicycle. The hole in the steel support is for fixing the bike with a chain lock.



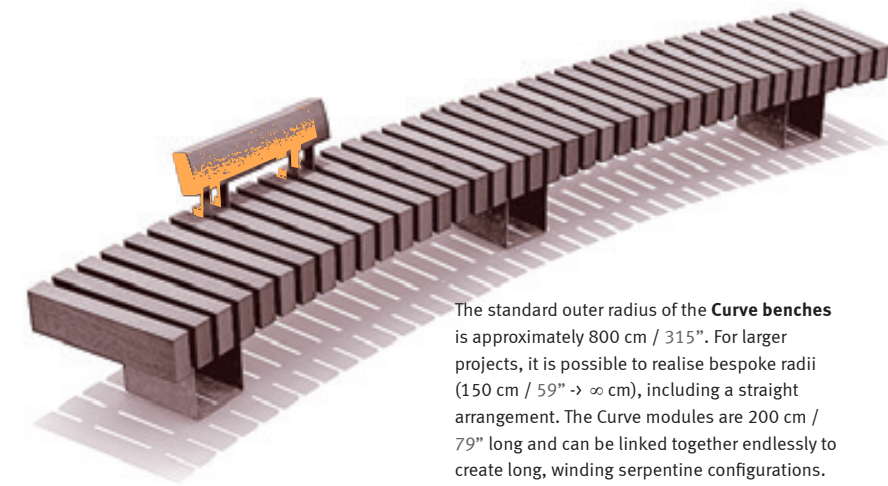
With the **R&R Inline parking** system a more traditional and larger parking facility for bicycles can be created. The modules can be connected to long and robust R&R fences.

2008/2009
copyright

The **R&R Circular benches** are monumental and timeless. The benches protect both the tree as well as the growing space. The R&R Circular benches are available in various diameters: D300 cm (seat depth 40 cm / 16"), D400 cm (seat depth 50 cm / 20") and D500, 600, 700 and 800 cm (seat depth 60 cm / 24").



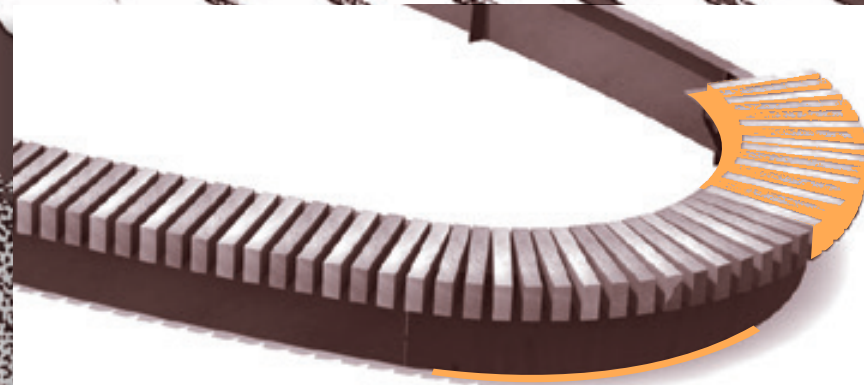
The transverse positioning of the timber beams not only results in a beautiful repeating effect, it also provides protection against damage caused by skaters. A natural **Anti-Skate** solution!



The standard outer radius of the **Curve benches** is approximately 800 cm / 315". For larger projects, it is possible to realise bespoke radii (150 cm / 59" \rightarrow ∞ cm), including a straight arrangement. The Curve modules are 200 cm / 79" long and can be linked together endlessly to create long, winding serpentine configurations.

The low and high **R&R backrests** (60 cm / 24" wide) are convexly planed and offer a surprising level of comfort. The length of the higher **Royal Back** is a multiple of 200 cm. As with the universal Streetlife armrests and the backrests can be mounted at almost any position.



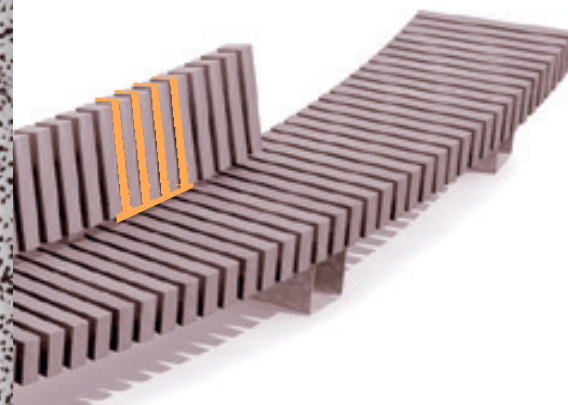


2008/2009
copyright



The hardwood beams of the R&R sitting edge in **R&R Tree Isles** are integrated into the steel construction by means of the **Embedded Streetlock®** fitting. The timber beams are invisibly mounted and easy to replace. A minimum outer radius of 300 cm / 118" is required to realize a sitting edge.

The CorTen or powder coated steel walls are available in modules and positioned 10 to 15 cm / 4" to 6" below ground level. Optionally, a small gutter of approximately 3 cm / 1" can be placed between the pavement and the wall.

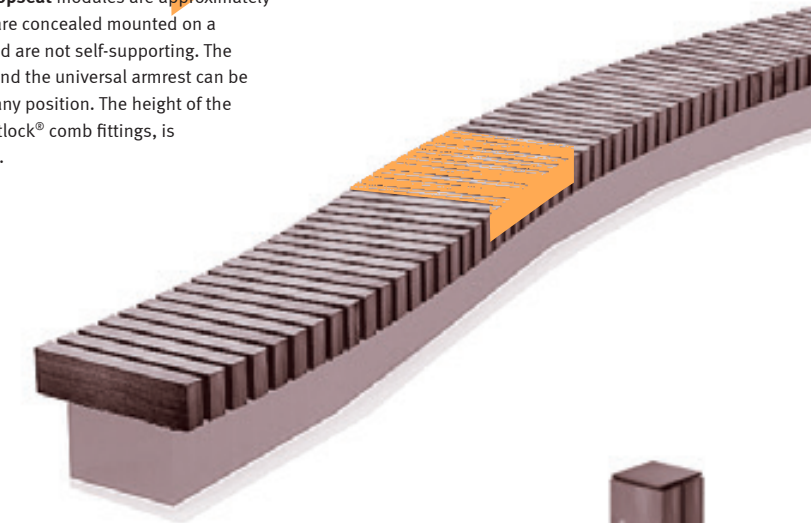
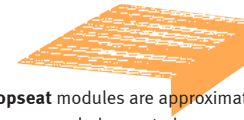


2010/2011
copyright

The low and high 60 cm / 24" wide **backrests** have been convexly planed. The universal Streetlife **armrest** can be mounted at almost any position. The length of the **Royal Back** modules is a multiple of 200 cm / 79".



The preassembled **R&R Topseat** modules are approximately 200 cm / 79" long. They are concealed mounted on a continual substructure and are not self-supporting. The three types of backrests and the universal armrest can be playfully fitted at almost any position. The height of the Topseats, including Streetlock® comb fittings, is approximately 17 cm / 7".



Two hardwood beams mounted to a galvanized or CorTen steel frame form this robust **R&R Bollard**. The cross section is 15x15 cm / 6"x6" and there are 2 heights: 45 and 75 cm / 18" and 29"

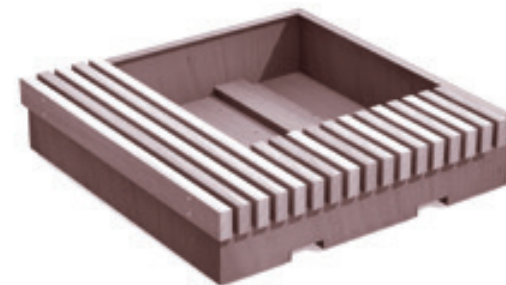


2010/2011 copyright

The CorTen or powder coated steel structure of the **Big Green Benches** is splendidly detailed and constructed from 4 mm / ²/₁₀" thick sheet metal. The Big Green Benches with base structure are moveable and can optionally be fitted with fork lift provisions. Without base structure, the Big Green Benches are suitable for mounting around existing trees and require embedded installation.



The hardwood beams of the **Big Green Benches** are integrated in the steel structure by means of the Embedded Streetlock® fitting system. This system allows for invisible mounting of the timber seat and easy replacement.



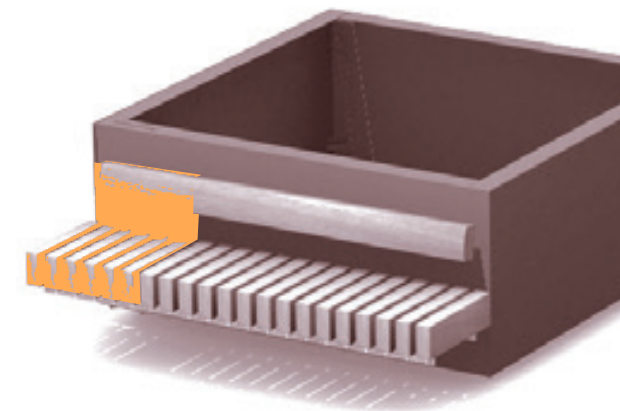
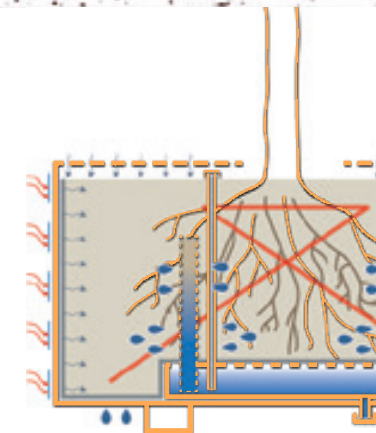
2014/2015 copyright

In the **Hug a Tub** models, R&R sitting beams and a convexly planed backrest are mounted to steel tree tubs. It is advisable to include the Treetec® Bottom Up system in these large Shrub tubs.



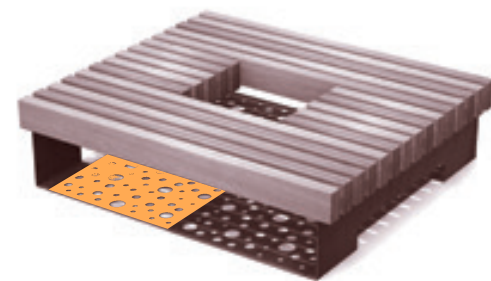
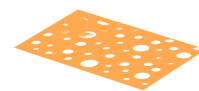
2012/2013 copyright

The large **R&R Basic Tree Tubs** have a spacious internal construction, which is suitable for the **Treetec® Bottom Up** system. Adequate insulation, root ball anchoring, oxygen circulation around the root ball, irrigation with capillary columns and excess water drainage are essential for proper tree development. The patented Treetec® system makes all this possible. More information can be found in the Tree Tub Technology chapter in the Streetlife Catalogue.

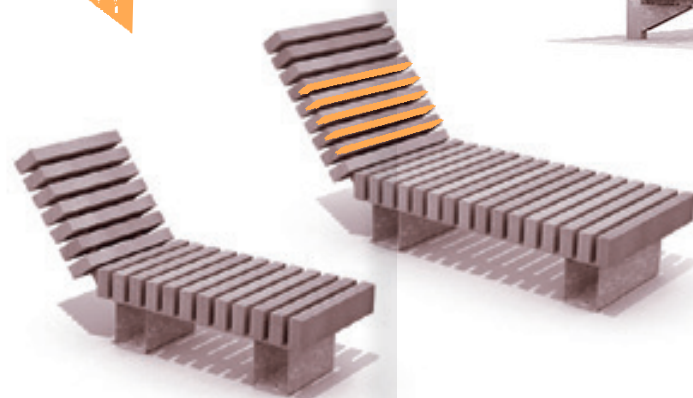


2014/2015
copyright

The Big Green Benches and **R&R Carré benches** have a timeless character. They combine tree and growing space protection with an attractive seating area. CorTen Tree Grids around the tree prevent waste accumulation and dehydration of the soil.

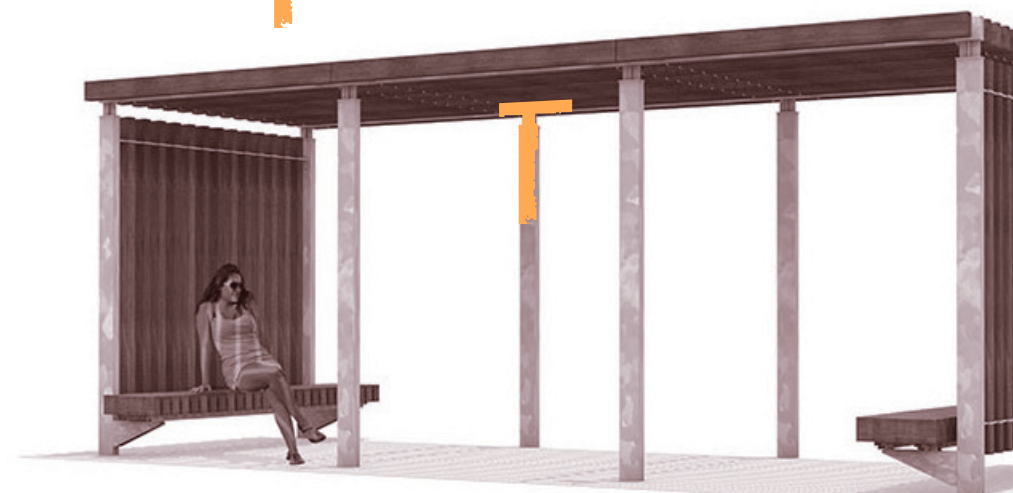


The **Rough&Ready Picnic Set** extends the robust, industrial range to providing social areas and workspaces. The set combines flawlessly with other R&R products. The picnic table top is made of hardwood beams (7x15cm- 3"x6") with a flat, integrated steel mid-section.



2016/2017
copyright

The **R&R Shades Linear** can be used to create straight and angular shade structures. The system's standard modular dimension is 240/300x300cm (94"/118"x118"). The walls can be filled in if desired, using 7x15cm R&R slats. The roof modules can be assembled with the beams running lengthwise or crosswise. Straight or Crosswise R&R benches and CorTen Shrubtubs can also be added seamlessly, complementing the Shade System style.



The R&R beams are mounted using the StreetLock® comb system. **R&R Loungers** even look great from the back thanks to their innovative construction. They are available in two models: XL and XXL. The Loungers are the result of a collaborative effort with James Corner Field Operations, New York.



All Rough&Ready products are protected by international modeldeposits and design patents.



Editor and Copyright 2017: Streetlife, Leiden
Concept, coordination and texts: Peter Krouwel, Aimée Kan
Elaboration: Kim van den Hoven, Julia Schuilenburg

Photography: Miro Švolík, Ferry Streng, Steve Swis, Ed Wonsek, Peterson Companies,
University of Winchester, Jared Steinmark, Kaj van Geel, Picture Birmingham,
Streetlife & Streetlife Studio Scandinavia
Printed by HRG, Litomyšl, Czech

In view of the variations in material prices, we advise you always to request a quote including prices and delivery times. The product measurements shown along with the images are in centimetres and rounded inches: length x width x height.
Right down to the smallest details, each Streetlife design is oriented to quality and sustainability. Streetlife reserves the right to modify dimensions, specifications and prices.



London (UK)



Brussels (BE)



R&R-BGB-S-250-90, 250x90x45 cm / 98"x35"x18"



R&R-BGB-S-250-90-AB, 250x90x45 cm / 98"x35"x18"



R&R-BGB-O-180, 180x180x45 cm / 70"x70"x18"



Double R&R-BGB-L-150-AB, 150x140x45 cm / 236"x35"x18"



Double R&R-BGB-S-300-90-PC + Low Backrest, 600x90x45 cm / 572"x35"x18"

The Rough & Ready Big Green Benches



Wuppertal (DE)



The Rough & Ready Big Green Benches

EN

The robust R&R Big Green Benches are available in an elongated shape with an integrated seating on one side and in a square shape with integrated seating on multiple sides.

In addition to the mobile versions that have a base structure, bottomless Big Green Benches can be used for existing trees that have already taken root in the ground, protecting both the tree and the growing space.

FR

Les audacieux Big Green Benches R&R sont disponibles en format rectangulaire avec assise en bordure d'un côté seulement, ou en format carré avec assise des deux côtés.

Outre les versions mobiles dotées d'un fond, il existe des Big Green Benches à fond ouvert pouvant être utilisés pour protéger des arbres enracinés en pleine terre.

DE

Die robusten R&R Big Green Benches sind in langer Form mit einseitiger Sitzfläche oder viereckig mit mehrseitigen Sitzflächen erhältlich.

Neben den transportablen Versionen mit Boden können Big Green Benches auch mit offenem Boden für bereits vorhandene Bäume geliefert werden, die im Boden wurzeln. Auf diese Weise werden Baum und Wachstumsraum geschützt.

NL

De stoere R&R Big Green Benches zijn verkrijgbaar in lange vormen met enkelzijdige zitrand en vierkant met meerzijdige zitranden.

Naast de mobiele versies met bodem, zijn Big Green Benches zonder bodem toepasbaar bij bestaande bomen, die in de volle grond wortelen. Op deze wijze worden de boom en groeiplaats beschermd.



Munich (DE)



's-Hertogenbosch (NL)

Houston (USA)



The Rough & Ready Loungers

The robust R&R Loungers are perfect for leisure areas like the Shelby Farms Park, one of America's largest urban parks. As Streetlife was included in the design process of James Corner Field Operations, it was possible to adapt some of the Streetlife products to a bespoke fit in the park.



XXL Lounger: R&R-LNG-230, 230x90x70 cm / 90" x 35" x 28"



XL Lounger: R&R-LNG-180, 180x70x55 / 71" x 28" x 22"

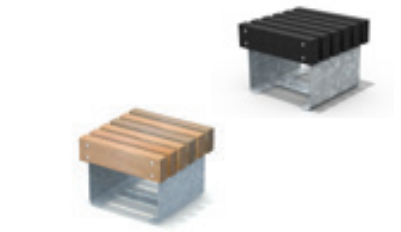




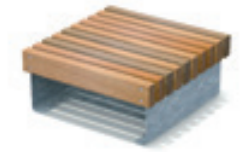
Mons (BE)



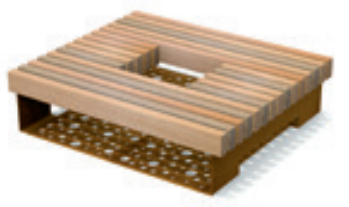
Gent (BE)



R&R-L6-CUB(AB), 59x59x45 cm / 23"x23"x18"



R&R-L10 Cube, 100x100x45 cm / 39"x39"x18"



R&R-CAR-150 + Tree Grille, 150x150x45 / 59"x59"x18"



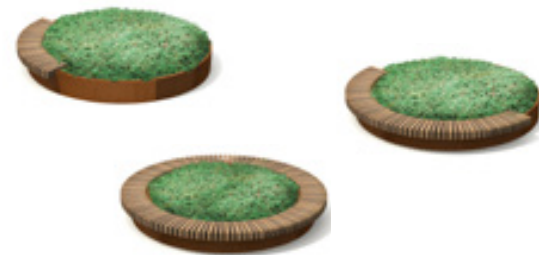
R&R-CAR-180 + Low Backrest, 180x180x45 / 71"x71"x18"



Lawrence (USA)

The Rough & Ready Carre Benches and Cubes

The Rough & Ready Tree Isles



R&R Round Tree Isles with seatings in 90, 180 and 360 degrees



Oval Tree Isle, 900x45 cm / 354"x18"



Rectangular Tree Isle, 600x300x45 cm / 236"x118"x18"



Delft (NL)



Middelhamnis (NL)



EN

De R&R Tree Isles offer the landscape architect a great deal of freedom. Straight or curved CorTen walls are fitted with R&R seating according to preference. Combining benches, greenery and waste paper bins in an R&R Tree Isle both simplifies and livens up the design of the outdoor space. Isles like these enhance the appreciation and use of the space considerably.

FR

Les îlots à arbre ouvrent de nouveaux horizons aux architectes paysagistes. Leurs parois droites ou courbes en acier CorTen peuvent être pourvues à l'envi d'assises R&R. Grâce aux îlots à arbres, qui associent verdure, banquettes et bacs à papier, les esplanades retrouvent une certaine animation tandis que l'espace s'en trouve comme simplifié. Les îlots contribuent à un usage plus fréquent des lieux et à une expérience qualitative améliorée.

DE

Die R&R Bauminseln bieten unglaublich vielfältige Möglichkeiten für den Landschaftsarchitekten. Gerade oder rund gewalzte Cortenstahlwände werden auf Wunsch mit R&R-Sitzflächen ausgestattet. Durch die Integration von Sitzbänken, Grün und einem Papierkorb in einer Bauminsel entsteht sowohl eine Vereinfachung als auch eine Belebung der Platzausstattung. Derartige Inseln erhöhen deutlich die Wertschätzung und die Nutzung durch die Anwohner.

NL

De R&R Tree Isles kennen een enorme vormvrijheid voor de landschapsarchitect. Rechte of rond gewalste CorTen wanden worden naar wens uitgerust met R&R zitranden. Door zitbanken, groen en papierbak te verenigen in een boomeiland creëert men zowel een vereenvoudiging als verlevendiging van de pleinrichting. Dergelijke eilanden vergoten de waardering en het gebruik aanzienlijk.



The Rough & Ready Hug a Tub



2x R&R-HTUB-U-150 + 3x R&R-HTUB-D-150, 750x150x90 cm / 295"x59"x35"



4x R&R-HTUB-L-250, 500x500x90 cm / 197"x197"x35"



Södertälje (SE)

Amerongen (NL)



EN
The Shrubtubs Tree Planters offer a stable base structure for mounting R&R wall benches and form the basis for the green R&R benches: Hug a Tubs. The Hug a Tub configurations remain mobile, making temporary layout variations possible. They are a highly attractive option equipping empty squares or concrete decks with green recreational areas. The robust R&R beams all run in the same direction, which allows for beautiful corner assemblies.

FR
Les Bacs à Arbre Shrubtubs constituent une base stable pour fixer des bancs muraux Rough&Ready. C'est ainsi qu'ont été créés les bancs verts: Rough&Ready Hug a Tub. Les structures Hug a Tub restent déplaçables, permettant ainsi de varier leur disposition. Elles conviennent parfaitement pour arborer et faire de espaces de détente de squares dénudés ou dalles béton. Les robustes lattes Rough&Ready sont alignées dans un seul sens, réalisant ainsi une belle structure angulaire. Les bancs muraux R&R peuvent aussi-bien être placés sur un seul côté, sur deux côtés, en angle ou tout-autour.

DE
Shrubtubs Baumkübel sind eine stabile Basis, zur Montage von Rough&Ready WandBänken. So entstehen die begrünten R&R-Bänke: Rough&Ready Hug a Tub. Die Hug a Tub Konfigurationen können verschoben werden, wodurch das Gesamtbild variiert. Perfekt geeignet zur Transformation von kahlen Plätzen oder Betonflächen zu gemütliche begrünte Aufenthaltsgebieten. Die soliden Rough&Ready-Sitzbalken liegen in einer Richtung, wodurch eine schöne Ecklösung entsteht.

NL
De R&R Hug a Tub is opgebouwd uit de Shrubtubs Boombakken in combinatie met vrijhangende R&R wandbanken. De Hug a Tub opstellingen blijven verplaatsbaar, zodat variatie in de opstelling mogelijk wordt. Ze zijn zeer geschikt om kale pleinen of betondekken van groene verblijfsplekken te voorzien. De robuuste Rough&Ready zitbalken lopen in één richting, waardoor een fraaie hoekoplossing gerealiseerd wordt.

Amsterdam (NL)



Toronto (CAN)



Amstelveen (NL)

Rough & Ready All Black



EN

All Black is a standard feature in the Streetlife Collection, and all products within the Rough&Ready Range can be made with these black beams. All Black is made of recycled plastic (PE and PP) from, for example, bottle caps, crates and agricultural plastics. No chemicals are added to the raw material, only soot for the colouring, All Black has a very low carbon footprint and can itself be recycled.

FR

All Black est disponible de façon standard dans la Collection Streetlife. Tous les produits du programme Rough&Ready peuvent être dotés de lames noires. All Black est fabriqué à partir de plastique recyclé (PE et PP) provenant notamment de bouchons en plastique, de casiers et de bâches agricoles. Aucun produit chimique n'est ajouté au matériau de base ; seulement de la suie pour la couleur. All Black a une empreinte carbone très réduite et est lui aussi recyclable.

DE

All Black wurde standardmäßig in die Streetlife Kollektion aufgenommen. Alle Produkte der Rough&Ready Produktfamilie können auch mit diesen schwarzen Balken ausgeführt werden. All Black ist aus recyceltem Kunststoff (PE und PP) hergestellt, der beispielsweise aus Flaschenverschlüssen, Getränkeboxen und Agrarfolien besteht. Dem Basismaterial werden mit Ausnahme von Ruß für die Farbgebung keine Chemikalien hinzugefügt. All Black hat einen äußerst kleinen CO2-Footprint und kann erneut recycelt werden.

NL

All Black is standaard in de collectie van Streetlife opgenomen. Alle producten binnen de Rough&Ready Range kunnen uitgevoerd worden met deze zwarte balken. All Black is gemaakt van hergebruikt kunststof (PE en PP) afkomstig van bijvoorbeeld flessendoppen, kratten en landbouwplastic. Aan het basismateriaal worden geen chemicaliën toegevoegd, enkel roet voor de kleuring. All Black heeft een zeer geringe CO2-footprint en is opnieuw recyclebaar.



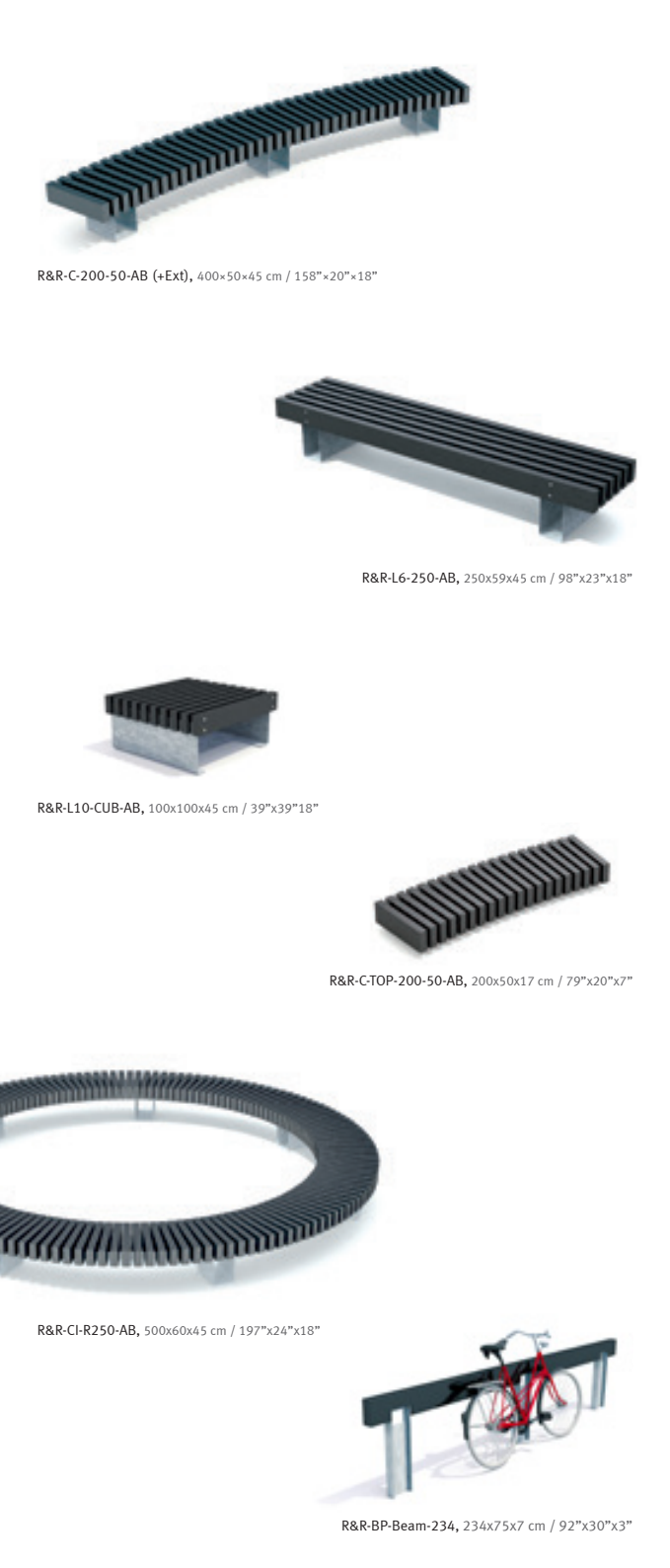
Jönköping (SE)



Newport (UK)



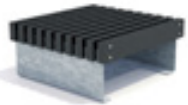
Rough & Ready All Black



R&R-C-200-50-AB (+Ext), 400x50x45 cm / 158"x20"x18"



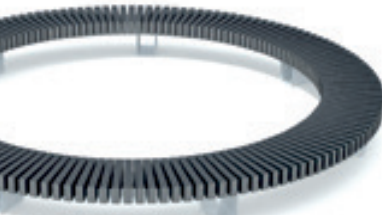
R&R-L6-250-AB, 250x59x45 cm / 98"x23"x18"



R&R-L10-CUB-AB, 100x100x45 cm / 39"x39"x18"



R&R-C-TOP-200-50-AB, 200x50x17 cm / 79"x20"x7"



R&R-CI-R250-AB, 500x60x45 cm / 197"x24"x18"



R&R-BP-Beam-234, 234x75x7 cm / 92"x30"x3"



Birmingham (USA)



Leiden (NL)

Lund (SE)



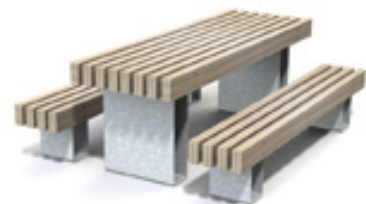
R&R-PS-234-CT, 234x187x83 cm / 92"x74"x33"



R&R-PS-200-TH-AB, 200x187x83 cm / 79"x74"x33"



R&R-PS-300-PC, 300x187x83 cm / 118"x74"x33"



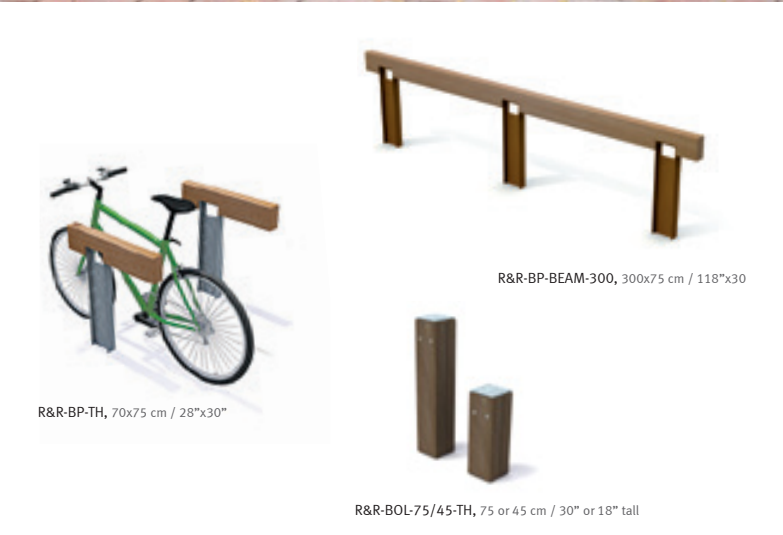
R&R-PS-234-TH-AW, 234x187x83 cm / 92"x74"x33"



The Rough & Ready Picnic Sets



Heemskerk (NL)



R&R-BP-BEAM-300, 300x75 cm / 118"x30"

R&R-BP-TH, 70x75 cm / 28"x30"

R&R-BOL-75/45-TH, 75 or 45 cm / 30" or 18" tall



Shelby Farms Memphis (USA)



London (UK)

The Rough & Ready Bollards & Bicycle Parking

The Rough & Ready Country Bridges



Sint-Martens-Bodegem (BE)

EN

The Country Bridges High have high, robust fences, to which horizontal stainless steel cables are fitted. The posts have an industrial character and are available in CorTen or hot-dip, galvanised steel. The R&R fencing system is equipped with a rigid beam of FSC-100% hardwood (7x15 cm) or All Black, a black synthetic material made of recycled agricultural plastic sheeting. The Country Bridges are flat and have a no-nonsense design.

FR

Les Passerelles Country High sont équipées de garde-corps hauts et robustes, dotés de câbles horizontaux en acier inoxydable tendus entre les poteaux. Les socles ont un caractère industriel et sont disponibles en CorTen ou en acier galvanisé à chaud. Le système de balustrade R&R est doté d'une poutre rigide en bois dur FSC-100% (7x15 cm) ou d'All Black, une matière synthétique noire, réalisée à partir de bâches agricoles recyclées. Les Passerelles Country sont dépouillées et planes.

DE

Die Country Brücken High haben hohe, robuste Baluster durch die horizontale Edelstahlseile gespannt werden. Die Baluster haben eine industrielle Ausstrahlung und sind in CorTen-Stahl oder thermisch verzinktem Stahl lieferbar. Das R&R-Balustersystem wird mit einem robusten Balken aus FSC-100% Hartholz (7x15 cm) oder mit ‚All Black‘ (schwarzer Kunststoff aus recyceltem Landbau-Kunststoff) Balken versehen. Die Country Bridges sind schlicht und flach.

NL

De Country Bruggen High hebben hoge robuuste balusters, waardoor horizontale RVS kabels worden gespannen. De staanders hebben een industrieel karakter en zijn verkrijgbaar in CorTen of thermisch verzinkt staal. Het R&R balustersysteem wordt voorzien van een stijve balk van FSC-100% hardhout (7x15 cm) of van All Black, zwart kunststof gemaakt van hergebruikt landbouw plastic. De Country Bruggen zijn no-nonsense en vlak.



Weesp (NL)



Country Bridge High

Country Bridge Low + All Black beams



Vlaardingen (NL)



EN

The Rough&Ready Shades Linear can be used to create straight and angular shade structures. The system's standard modular dimension is 240/300x300cm (94"/118"x118"). The walls can be filled in if desired, using 7x15cm R&R slats. The roof modules can be assembled with the beams running lengthwise or crosswise. Straight or Crosswise R&R benches and CorTen Shrubtubs can also be added seamlessly, complementing the Shade System style.

FR

Les Rough&Ready Shades linéaires conviennent particulièrement bien aux structures droites et angulaires. La dimension standard des modules est de 240/300x300cm. Les parois murales peuvent intégrer des lattes R&R de 7x15cm. Les lattes constituant les modules de toit peuvent être posées, au choix, dans le sens de la longueur ou de la largeur. Il est possible d'alterner des modules configurés dans le sens de la longueur avec des modules configurés dans le sens de la largeur. Des bancs droits R&R ou R&R Crosswise, ainsi que des bacs à arbre Shrubtubs en acier CorTen, viennent compléter le système de stores R&R.

DE

Mit den Rough&Ready Shades Linear lassen sich gerade und eckige Schattenstrukturen realisieren. Das System-Modulmaß beträgt 240/300x300cm. Auch die Wände können mit R&R Balken von 7x15cm gestaltet werden. Die Balken der Dachmodule können wahlweise quer oder in Längsrichtung oder aber abwechselnd angebracht werden. Gerade oder Crosswise R&R Bänke und CorTen Shrubtubs runden das Shade System ab.

NL

Met de Rough&Ready Shades Linear zijn rechte en hoekvormige Shade-structuren te realiseren. De systeem moduulmaat is 240/300x300cm. Ook de wanden zijn met R&R balken van 7x15cm in te vullen. De balkrichting van de dak modules zijn naar keuze dwars af in de lengte richting te plaatsen. Ze kunnen ook afwisselend toegepast worden. Rechte of Crosswise R&R banken en CorTen Shrubtubs completeren het Shade systeem.



The
Rough &
Ready
Shades



The Streetlife Collection

STREETLIFE is a design driven company for innovative outdoor concepts. The Collection consists of the following categories: Street Furniture | Benches | Tables | Tree Planters | Tree Grids | Bicycle Parking | Bollards | Bridges and Deckings

Please contact us by e-mail: streetlife@streetlife.nl
Our experienced advisors are well trained in technical details and are able to communicate in English, Nederlands, Deutsch, Français, Español and Svenska.

More information is available on our website www.streetlife.nl or www.streetlifeamerica.com

- find the complete and innovative Streetlife Collection and get inspired
- product search tool: The Product Selector
- recent projects and product photos
- our online catalogues (PDF) are available in Nederlands, English, Deutsch & Français
- hardcopy is available in Nederlands, English, Deutsch and Français.

Streetlife Collection

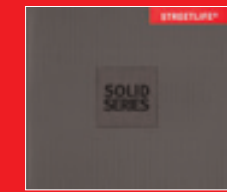


Catalogue

Thematic Brochures



Rough&Ready



Solid Series



Green&Groovy



Walking on Water

